



Welcome to
South Iceland

south.is | [#southiceland](https://twitter.com/southiceland)



Visit South Iceland



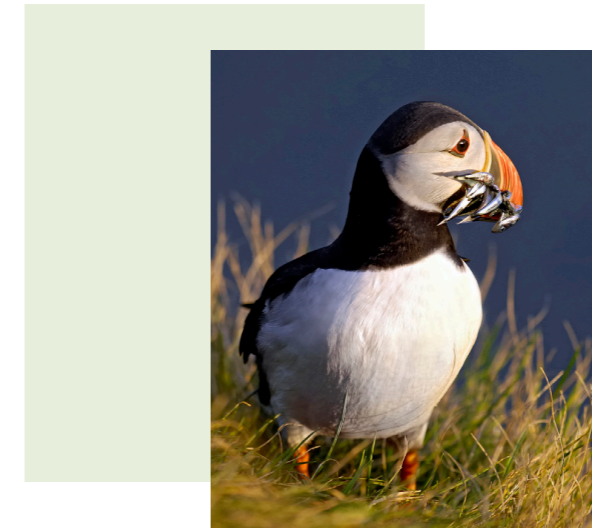
Contents

- 5 Welcome to South Iceland
- 9 Nature
- 10 Dining
- 13 Activities
- 14 History & Culture
- 17 Staying

Published November 2019
by Markaðsstofa Suðurlands | Visit South Iceland – www.south.is
Layout & design by VERT-markaðsstofa – www.vert.is
Printed by Oddi – www.odd.is

Photography
Páll Jökull Pétursson, Þórir N. Kjartansson, Þorsteinn Roy Jóhannsson, Ívar Sæland,
Haukur Snorrason, Snorri Baldursson, members of Visit South Iceland, Ao Thor
Photography, Shutterstock and iStock.

The great variety and the quality of services enables you to enjoy the best of what Iceland has to offer.



Welcome

to South Iceland

A unique part of Iceland that is visited by far the greatest numbers of foreign travelers. South Iceland has a diverse and spectacular natural environment with great attraction that is easy to access and experience all year round.

The great variety and the quality of services enables you to enjoy the best of what Iceland has to offer. This great diversity, both in natural attractions and activities, inspires you to explore the area in three parts where every one of them is well worth the visit; the Golden Circle area, Katla Geopark and Vestmannaeyjar as well as the Vatnajökull region.



- South Iceland is the most visited region in Iceland -

The Golden Circle area – ENERGY

The Golden Circle area reaches from Selvogur west of Þorlákshöfn to the east of the town of Hella, along the seaside, and into the highlands. The area is as vast as it is diverse; there is a wide variety of attractions such as Þingvellir National Park, Gullfoss and Geysir, which together comprise the golden circle, the highland areas of Kerlingarfjöll, Kjölur, Sprengisandur and Landmanna-laugar, Langjökull glacier and the Hekla volcano with its surrounding area, to name a few.

The area has a rich food culture and a longstanding history of producing dairy products, meat and vegetables. The area's natural geothermal energy has also been a source for innovation and inspiration when it comes to food and you might find restaurants that use hot springs to actually cook some dishes.

Katla UNESCO Global Geopark & Vestmannaeyjar – POWER

Katla Geopark is Iceland's first geopark and it opens up a natural wonderland to visitors. A top priority of the park is to protect the natural environment, promote local sustainable development, introduce local culture and place a strong emphasis on nature tourism.

Katla UNESCO Global Geopark got its name from one of its most known volcanoes, Katla, which lies under the glacier Mýrdalsjökull.

Katla Geopark is in every sense the land of ice and fire, with towering glaciers and active volcanoes. These forces have been shaping the land for thousands of years. This area has amazing landscapes – mountains, lakes, black beaches, green pastures and meadows, powerful glacial rivers, beautiful waterfalls and vast lava fields.

The Westman Islands are a group of islands off the south coast of Iceland. They consist of 15 islands in addition to 30 cliffs and skerries that make up the archipelago. Heimaey is the largest island and the only inhabited one.

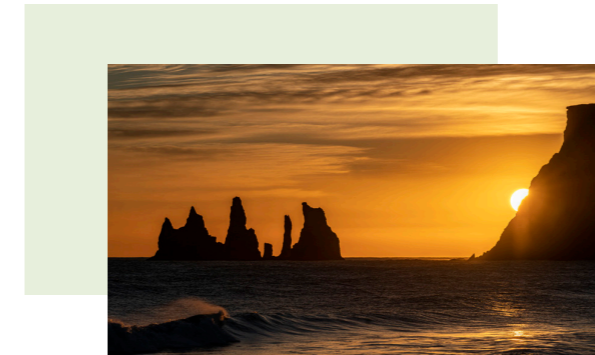
The Vatnajökull Region – PURITY

The Vatnajökull Region reaches from majestic Lómagnúpur in the west to scenic Hvalnes cape in the east. In this area travelers can visit Vatnajökull, the largest glacier in Europe, and its surrounding area, which has a lot to offer. Vatnajökull National Park is a magnificent area that boasts incredible ice caves, magical lagoons of floating ice, and crawling outlet glaciers, some within easy reach. In the most western part of the Vatnajökull Region is Skeiðarársandur, the largest black "glacier" sand area in the world.

You will be in awe while travelling along the stunning countryside in the southeast, nestled between the glaciers and the Atlantic coastline. In addition, the scenic fishing town of Höfn is well worth a visit, as it is also known as the "Lobster Capital" of Iceland.

The three areas of South Iceland





Nature

in South Iceland

South Iceland has a diverse and spectacular natural environment with great attraction that is easy to access and experience all year round. In South Iceland you can find glaciers, volcanoes, black sand beaches, mountains, waterfalls, hot springs and untouched highlands.

In all seasons of the year you can find something you like. In winter, the sun is reflected on the pearly white snow; on long dark winter nights, the northern lights dance around the starlit sky and the moon wanders through the clouds. At such times beauty, peace and quiet reign, unforgettable to those who experience it. Trips across the highlands as well as the lowlands are an indescribable adventure during both summer and winter.

But above all, there is the awesome and rugged nature stretching from the mountains and down to the sea.



- South Iceland has Katla UNESCO Global Geopark and three other UNESCO sites -



Dining

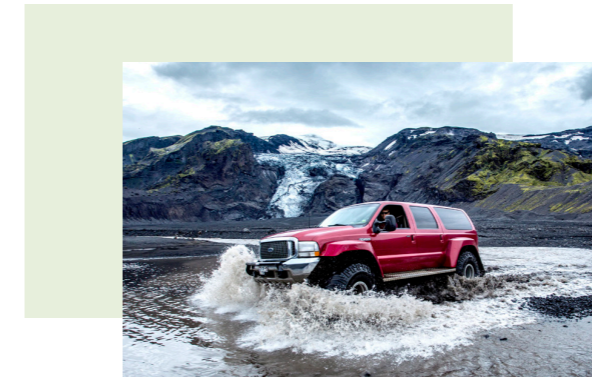
in South Iceland

Essential part of traveling to foreign countries is to experience the food culture and taste original and national cuisines. South Iceland is no different in that matter.

South Iceland is truly a fantastic source of food all year around. You can enjoy fresh and diverse selection of products from South Iceland and experience various cooking methods. For example geothermal baked bread, freshly grown vegetables, locally produced ice cream, freshly caught fish, langoustine and locally brewed craft beers to name a few.

You can find local products at restaurants, shops or other markets and also straight from producers. South Iceland can proudly offer restaurants where great emphasis is laid on professional and diverse menu.





Activities

in South Iceland

You can find all the great forces in South Iceland; fire & ice, glaciers, black beaches, volcanoes and waterfalls. Outdoor enthusiasts feel at home in South Iceland. Not only does the region have flourishing lowland agricultural communities but majestic peaks for those desiring a challenge. Other recreational activities include scenic walks and bird watching, glacier tours, cave exploring, snowmobiling, kayaking, ATV rides, river rafting and horse riding.

South Iceland is for all those who want to enjoy nature, culture and peace or are looking for situations to fulfill their needs, dreams and desires.

Whatever the reason for the visit is, South Iceland should be an essential destination for you when visiting Iceland.





The History & Culture

of South Iceland

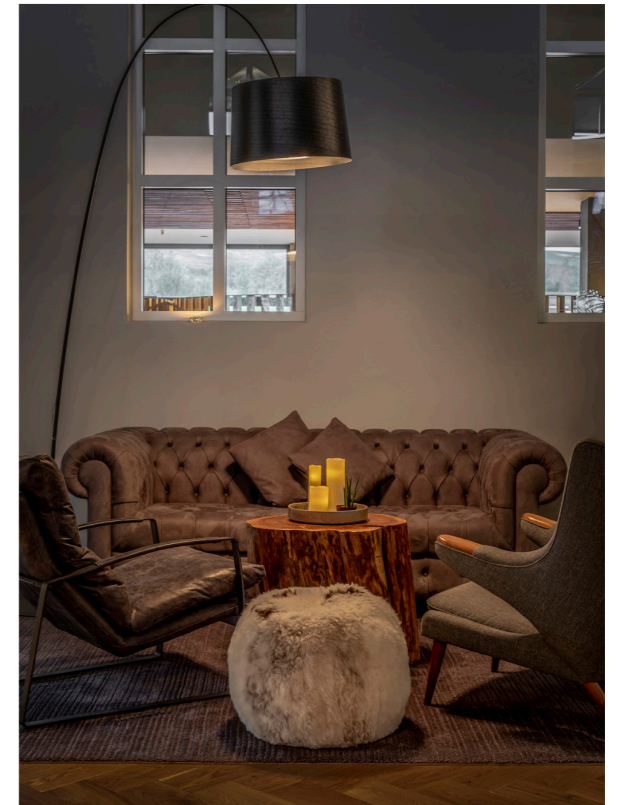
The southern part of Iceland is rich in history, art and cultural events. In the local museums and exhibitions you can find information on volcanoes, glaciers and the Icelandic biological diversity, literature and poets, Icelandic seafarers' history and marine biology, fishing, chess, rocks, and moss, in addition to the diverse history of various towns and villages. Learn about environmentally friendly hydro-power plants, the practical use of geo-thermal energy, and get familiar with what it is like to live in a geo-thermally active area. Explore local art, architecture, or maybe drop by the last cave-dwellers of Iceland.



Take a walk through history

- South Iceland has two national parks -

*From Hostels to Luxury Hotels
and everything in between*



Staying

in South Iceland

In South Iceland you can find wide range of accommodation options. From hostels to luxury hotels and everything in between. You should find the accommodation for your need and your chosen location. Around each corner you can spot something spectacular that is easy to access and experience all year round. You can find accommodation of your choice all year around.

Enjoy staying in the southern countryside and witnessing the beauty, listening to the wind and the silence, discovering the peace and quiet, and last but not least you may even discover yourself.

Stay with us – it will stay with you.



- South Iceland has the most satisfied visitors in Iceland -



The land of Fire & Ice

The South region really is spot on in regards to Iceland's old nickname – the Land of Fire and Ice. Here you have the most famous volcanoes and glaciers. These forces have been shaping the land for thousands of years and the nearest examples of that are the powerful eruptions in the famous Eyjafjallajökull 2010 and Grímsvötn in the year 2011.

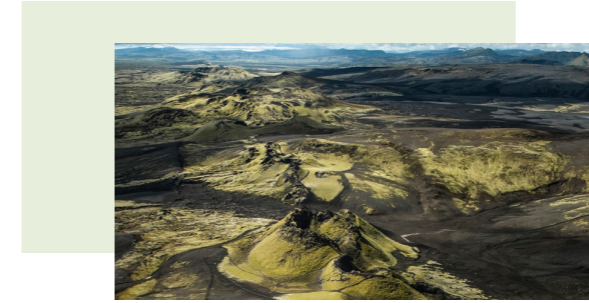
Geothermal energy and bathing

Geothermal energy is one of Iceland's most important power sources and the South is the home to some of the largest geothermal areas in Iceland. Green energy has been and still is utilised for heating greenhouses, washing laundry, bathing and for cooking and baking. The geothermal energy also creates plenty of hot natural pools in many shapes and sizes, where you can bathe year round.

Black beaches

South Iceland boasts around 500 km (311 miles) of coastline, from the town Þorlákshöfn in the West to Höfn in the East. Between the two towns are many black sand beaches that change color slightly in different seasons of the year and in different lights, offering great photo opportunities.





Amazing caves

Ice caves are amazing wonders of nature, hiding under the glaciers. If you are into photography or just interested in exploring adventurous things in Iceland, you should book an ice cave tour in South Iceland. The season for visiting glacial ice caves depends on location and weather conditions. The ice caves can shift and change from year to year and we warn you never to enter ice caves without the proper equipment and an experienced guide.

For spelunkers and potholers, Iceland has scores of caves, large and small, deep and shallow. Some caves may be explored without a guide and many agencies offer cave exploration tours for others.

Volcanic activity

South Iceland is one of the most active volcanic areas in Iceland. The geographic region is characterized with central volcanoes, eruption craters and fissures, lava fields, SW-NE trending hyaloclastite ridges and tuff mountains. The glaciers are prominent in the landscape as they cover the highest mountains, and volcanoes, in the area. Active volcanoes under ice sheets produce gigantic glacier outburst floods and have formed outwash plains in the lowlands.

The Icelandic horse

The Icelandic horse is a favorite of many and well known around the world. Small herds were first brought to Iceland from Norway and no other horses have been allowed on the island since then, resulting in a pure breed, known for its character and fifth gait. The South region is the largest agricultural area in Iceland and the Icelandic horse has been an integral part of the workforce, utilised for transport and as a pack and draft animal.



Facts about South Iceland

- In South Iceland you'll find **the biggest Glacier in Europe**. It is actually larger than all the other glaciers in Europe combined.
- In South Iceland you'll find **22 swimming pools**.
- South Iceland's coastline is around 500 km and mostly **black sand beach**.
- In South Iceland you'll find **5 craft breweries**.
- South Iceland has several geysers. **The English word geyser is derived from Iceland's famous Geysir**.
- "Hekla" is a common female name in Iceland, it is also the name of one of its **most active volcano**. It is 1,491 m in height and situated in South Iceland.

Respecting nature when traveling in Iceland

The Icelandic nature is magnificent, but fragile. The vegetation is easily breached. It suffers greatly from too much trampling and its wounds are slow to heal.

Please be considerate of our beautiful and fragile nature and **only camp overnight in designated camping areas**.



Enjoy your travels
- drive safe!

POLICE REGULATION FOR MUNICIPALITIES IN SOUTH ICELAND STATES:

"It is forbidden to stay the night in tents, campers, caravans, collapsible campers, tent trailers and other compatible equipment, outside of designated camping areas."



More information on camping in South Iceland:

south.is/campingwinter

south.is/camping



Welcome to Spectacular

www.south.is | [#southiceland](https://twitter.com/southiceland)



Visit South Iceland